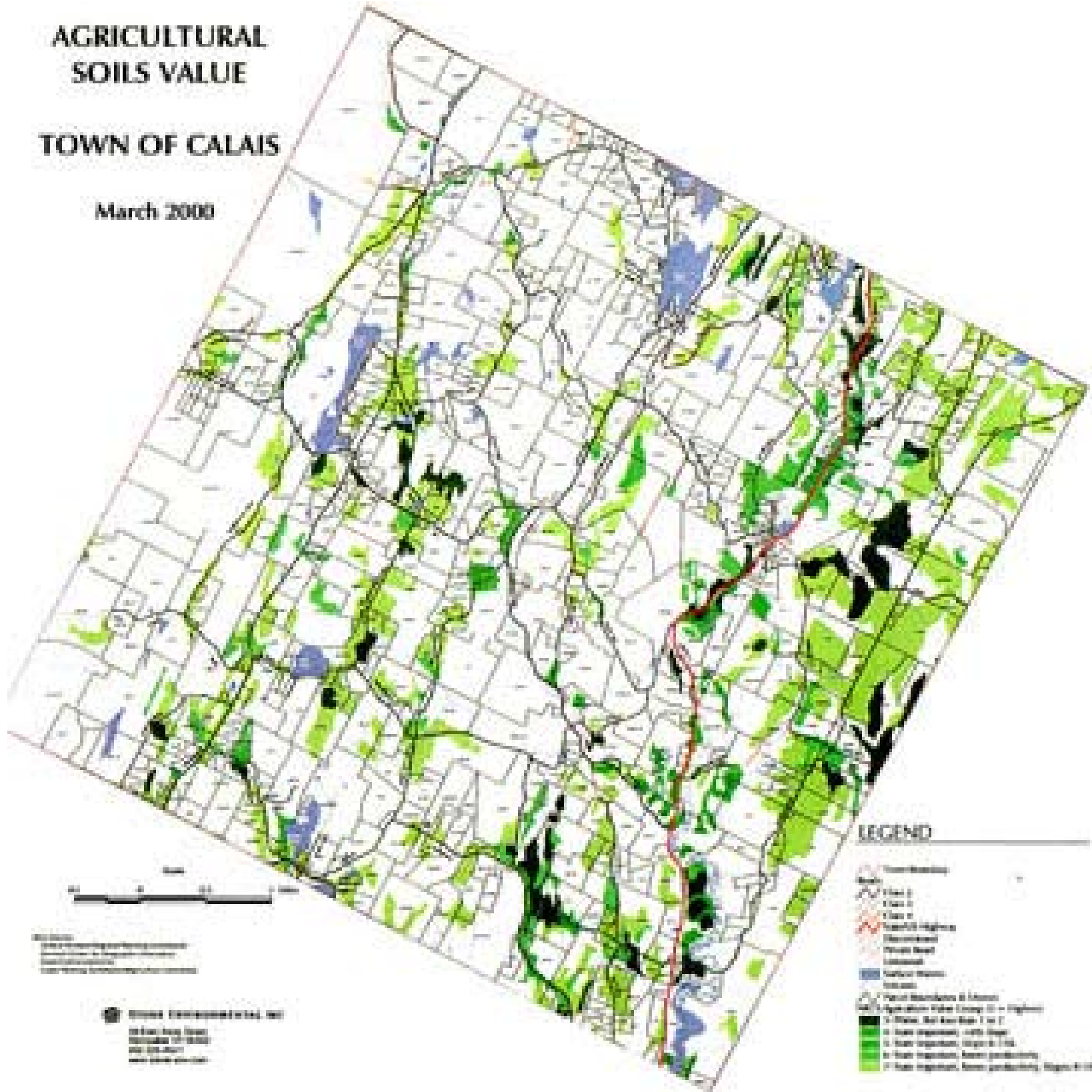


# AGRICULTURAL SOILS VALUE

## TOWN OF CALAIS

March 2000



- LEGEND**
- Transportation
    - State Road
    - Class I
    - Class II
    - Class III
    - Local Highway
    - Intersecting
    - Private Road
    - Unimproved
  - Water Bodies
    - Surface Water
    - Stream
  - Other Features
    - Open Woodlands & Shrubland
    - Open Water
  - Agriculture Value Group 1 - Highest
    - 1 - Best, Soil Area 1 or 2
    - 2 - Good, generally, 10% slope
    - 3 - Fair, generally, 10% to 15%
    - 4 - Fair, generally, lower productivity
    - 5 - Fair, generally, lower productivity, slope 6 to 10%



Map Date:  
Map Scale:  
Map Projection:  
Map Datum:

**State Environmental Art**  
100 East Main Street  
Montpelier, VT 05602  
802-223-8000  
www.state.vt.us